



APPARTAMENTI WOHNUNGEN

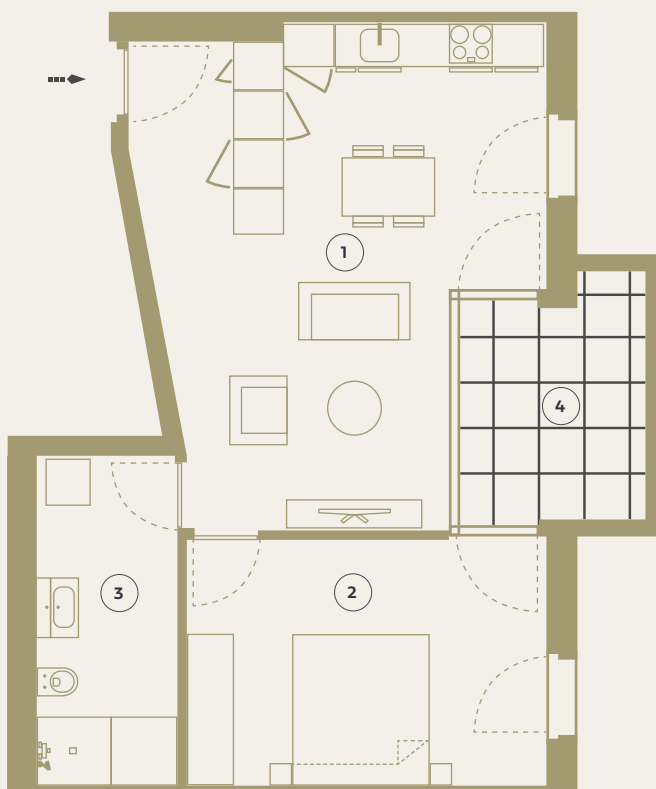
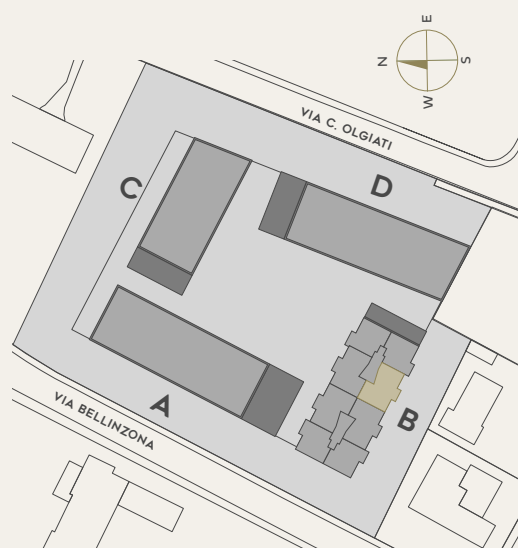
B.1.37 / B.2.45 /
B.3.53 / B.4.61

PALAZZO / HAUS	B
PIANO / ETAGE	1-4
CAMERE / ZIMMER	2.5

1. CUCINA - SOGGIORNO / WOHNKÜCHE	30.0 m ²
2. CAMERA / SCHLAFZIMMER	15.6 m ²
3. DOCCIA / DUSCHBAD	8.0 m ²

SUPERFICIE CALPESTABILE ca. 53.6 m²
/ NUTZBARE WOHNFLÄCHE

4. BALCONE / BALKON	7.0 m ²
---------------------	--------------------



Scala/
Masstab: 1:150