



APPARTAMENTI WOHNUNGEN

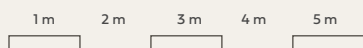
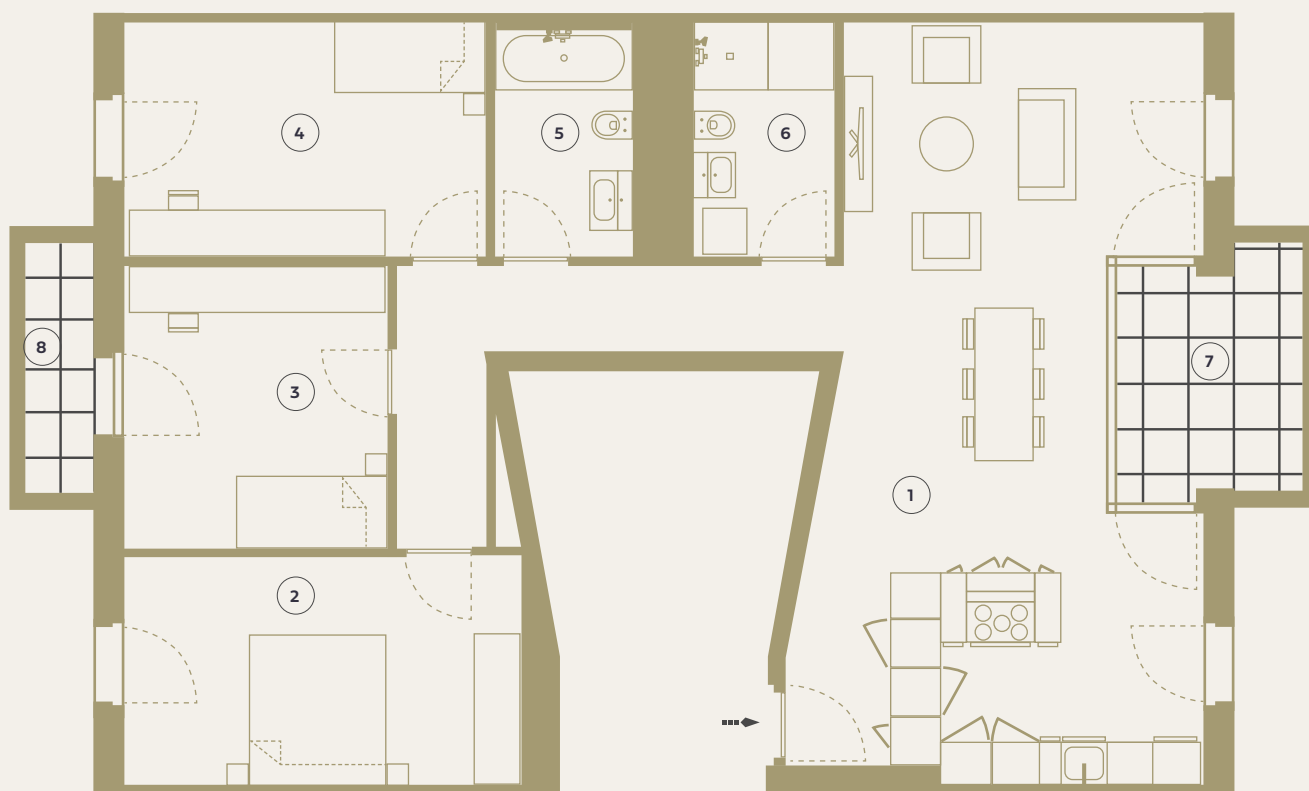
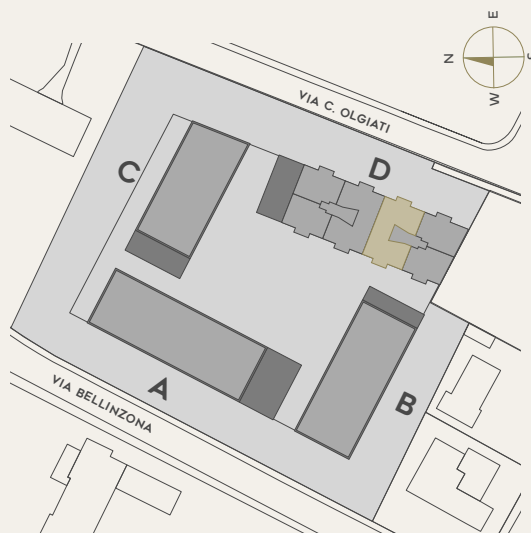
D.1.85 / D.2.91 /
D.3.97 / D.4.103

PALAZZO / HAUS D
PIANO / ETAGE 1-4
CAMERE / ZIMMER 4.5

- | | |
|-----------------------------------|---------------------|
| 1. CUCINA - SOGGIORNO / WOHNKÜCHE | 55.7 m ² |
| 2. CAMERA 1 / SCHLAFZIMMER 1 | 16.0 m ² |
| 3. CAMERA 2 / SCHLAFZIMMER 2 | 12.9 m ² |
| 4. CAMERA 3 / SCHLAFZIMMER 3 | 14.8 m ² |
| 5. BAGNO / BADEZIMMER | 5.5 m ² |
| 6. DOCCIA / DUSCHBAD | 5.8 m ² |

SUPERFICIE CALPESTABILE ca. 111.1 m²
/ NUTZBARE WOHNFLÄCHE

- | | |
|---------------------|--------------------|
| 7. BALCONE / BALKON | 8.2 m ² |
| 8. BALCONE / BALKON | 3.3 m ² |



Scala/
Masstab: 1:150