



## APPARTAMENTI WOHNUNGEN

D.1.86 / D.2.92 /  
D.3.98 / D.4.104

**PALAZZO** / HAUS

D

**PIANO** / ETAGE

1-4

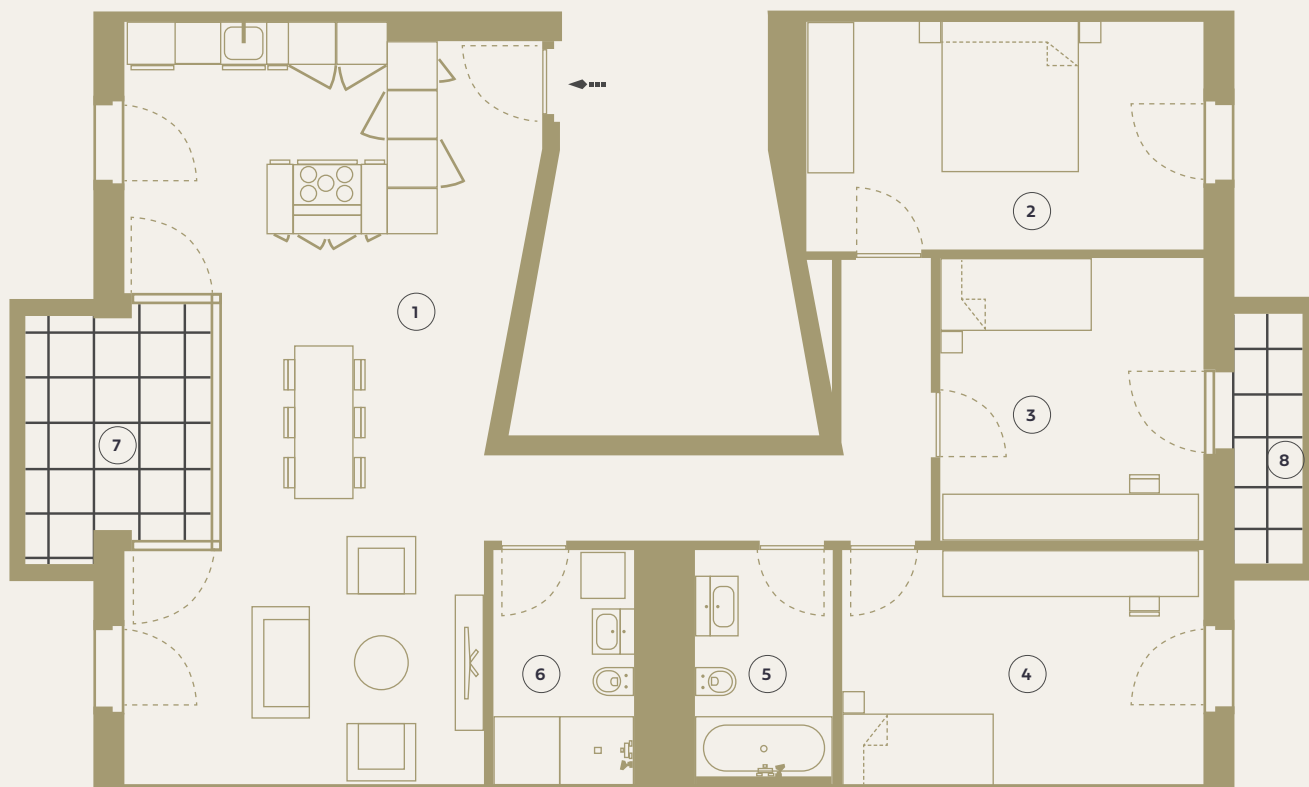
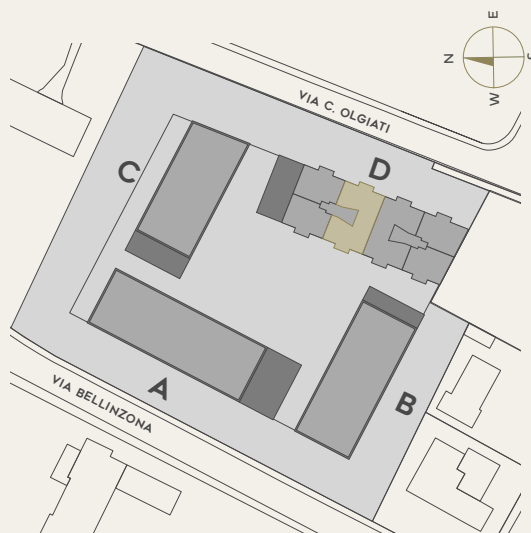
**CAMERE** / ZIMMER

4.5

- |                                   |                     |
|-----------------------------------|---------------------|
| 1. CUCINA - SOGGIORNO / WOHNKÜCHE | 55.7 m <sup>2</sup> |
| 2. CAMERA 1 / SCHLAFZIMMER 1      | 16.0 m <sup>2</sup> |
| 3. CAMERA 2 / SCHLAFZIMMER 2      | 12.9 m <sup>2</sup> |
| 4. CAMERA 3 / SCHLAFZIMMER 3      | 14.8 m <sup>2</sup> |
| 5. BAGNO / BADEZIMMER             | 5.5 m <sup>2</sup>  |
| 6. DOCCIA / DUSCHBAD              | 5.8 m <sup>2</sup>  |

**SUPERFICIE CALPESTABILE** ca. 111.1 m<sup>2</sup>  
/ NUTZBARE WOHNFLÄCHE

- |                     |                    |
|---------------------|--------------------|
| 7. BALCONE / BALKON | 8.2 m <sup>2</sup> |
| 8. BALCONE / BALKON | 3.3 m <sup>2</sup> |



Scala/  
Massstab: 1:150